

Wiring Kits

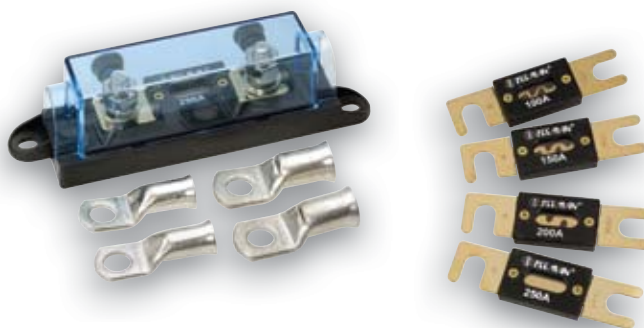
When mounting an inverter in a vehicle, caravan, boat or cabin it may be preferable to use longer DC battery cables than those supplied so that the inverter can be placed in a more convenient, cooler or more protected location.



INVERTER SIZE (WATTS)	12 VOLT				24 VOLT	
	300	600	1000	2000	1000 24V	2000 24V
3M Cable P/No	IWK1 8mm ² (8 B&S)	IWK3 32mm ² (2 B&S)	IWK3 32mm ² (2 B&S)	IWK6 49mm ² (0 B&S)	IWK3 32mm ² (2 B&S)	IWK3 32mm ² (2 B&S)
6M Cable P/No	IWK2 26mm ² (3 B&S)	IWK4 49mm ² (0 B&S)	IWK5 64mm ² (00 B&S)	Not Recommended	IWK4 49mm ² (0 B&S)	IWK5 64mm ² (00 B&S)

Recommended Fuse

It is recommended that a circuit breaker or high current fuse be placed in the DC positive (+) line close to the battery to protect the cable from catching fire in the event of a short circuit.



INVERTER SIZE (WATTS)	12 VOLT				24 VOLT	
	300	600	1000	2000	1000 24V	2000 24V
Recommended Protection	IFB-40 40A auto reset circuit breaker	IFB-100 Fuse box with 100A ANL fuse	IFB-150 Fuse box with 150A ANL fuse	IFB-250 Fuse box with 250A ANL fuse	IFB-100 Fuse box with 100A ANL fuse	IFB-150 Fuse box with 150A ANL fuse
Replacement Fuse	–	IF-100 100A ANL fuse	IF-150 150A ANL fuse	IF-250 250A ANL fuse	IF-100 100A ANL fuse	IF-150 150A ANL fuse