



INTELLI-RV

12V POWER MANAGEMENT SYSTEM

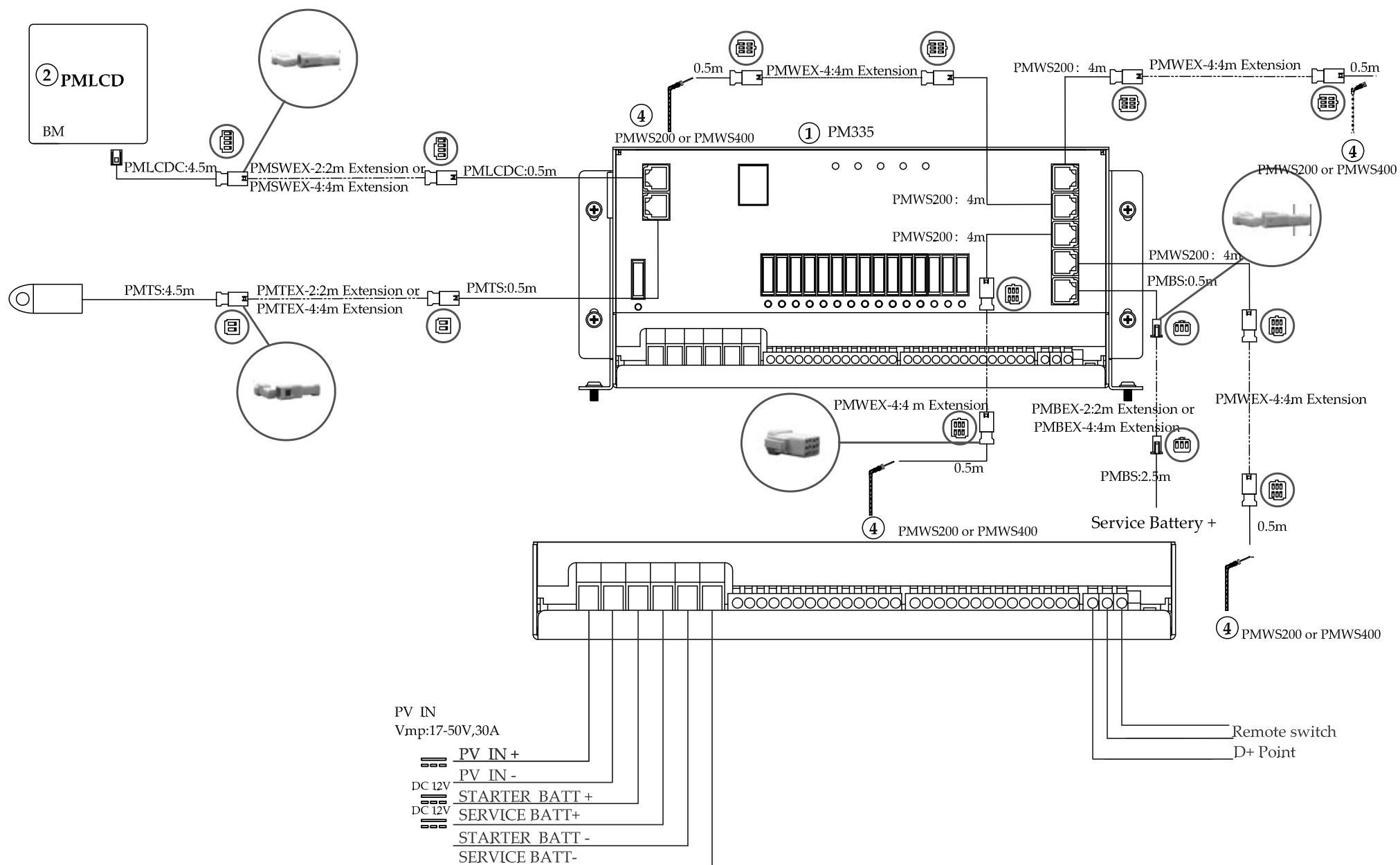
INSTALLATION GUIDE

P/No. PM300



WARNINGS

- Explosive gases. Prevent flames and sparks. Provide adequate ventilation during charging
- Before charging, read the instructions
- For indoor use. Do not expose to rain
- For charging lead acid batteries ONLY (of the size & voltage specified in the specifications table)
- Always charge the battery on the correct voltage setting. Never set the charger to a higher voltage than the battery
- Disconnect the 240V mains supply before making or breaking the connections to the battery
- The battery charger must be plugged into an earthed socket outlet
- Connection to supply mains is to be in accordance with National wiring rules
- Do not attempt to charge non-rechargeable batteries
- Never charge a frozen battery
- If the AC cord is damaged, do not attempt to use. It must be replaced or repaired by a qualified person
- Corrosive substances may escape from the battery during charging and damage delicate surfaces. Store and charge in a suitable area
- This charger is not intended for use by persons (including children) with reduced physical, sensory or mental capabilities, or lack of experience and knowledge, unless they have been given supervision or instruction concerning the use of the appliance by a person responsible for their safety
- Young children should be supervised to ensure that they do not play with the appliance

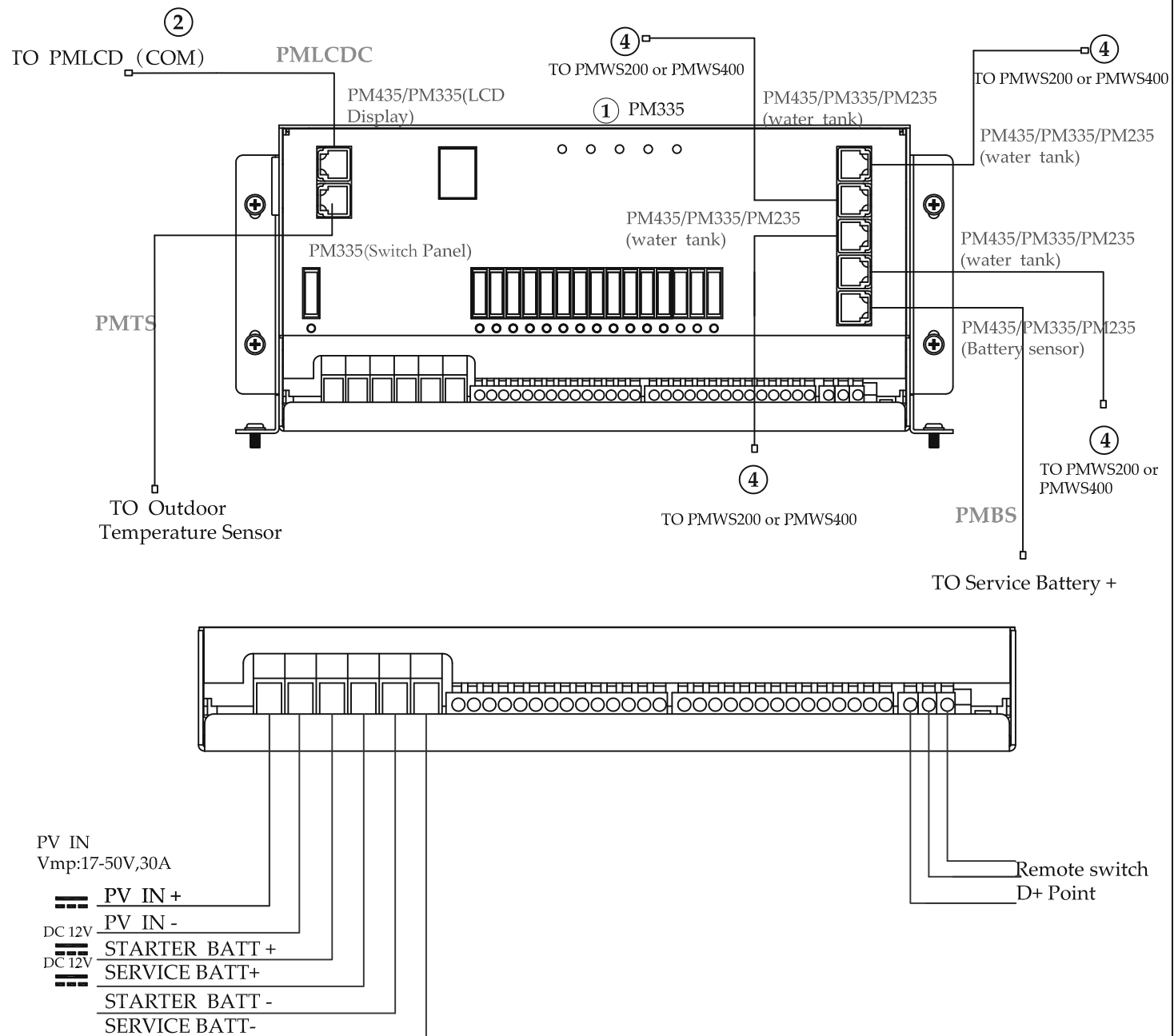


Code	Name	Model	Qty	Part No. on drawing
1	12V 20A Charger and 35Amp Power supply, 30A MPPT Solar controller	PM335	1	1
2	LCD DisplayT/S PM335	PMLCD	1	2
3	200mm water sensor with 4.5m cable	PMWS200 (not supplied)	0	4
4	400mm water sensor with 4.5m cable	PMWS400 (not supplied)	0	4

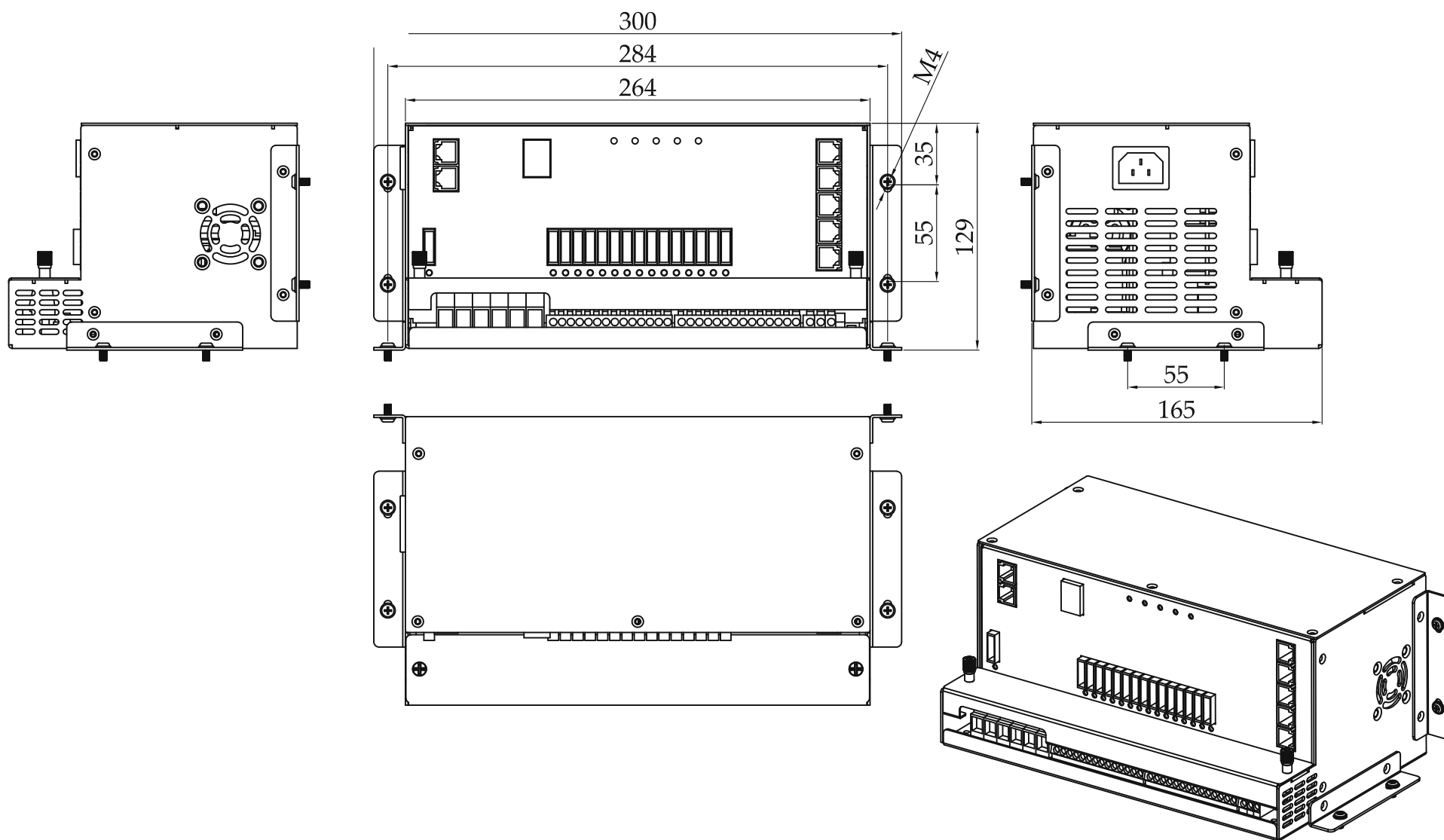
Code	Description	Qty	Length
PMLCDC	5m Cable to suit PMLCD	1	5m
PMBS	Battery sensor with 3m cable	1	3m
PMTS	Temperature sensor with 5m cable	1	5m
PMSW200	4.5m Cable to suit PMWS200 (not supplied)	0	4.5m
PMAC	AC power cord, 1.5m, AUS	1	1.5m

1 PM335

Pin No	Pin Definitions	Specification
1	PV+	Connect to PV +
2	PV-	Connect to PV -
3	Starter BAT+	Connect to starter battery +
4	Service BAT+	Connect to service battery +
5	Starter BAT-	Connect to starter battery -
6	Service BAT-	Connect to service battery -
7	L1+	Connect to Step +
8	L2+	Connect to load of class C +
9	L3+	Connect to load of class C +
10	L4+	Connect to load of class B +
11	L5+	Connect to load of class B +
12	L6+	Connect to load of class B +
13	L7+	Connect to load of class B +
14	L8+	Connect to load of class B +
15	L9+	Connect to load of class B +
16	L10+	Connect to load of class B +
17	L11+	Connect to Pump +
18	L12+	Connect to load of class B +
19	L13+	Connect to load of class B +
20	L14+	Connect to load of class B +
21	L1-	Connect to Step -
22	L2-	Connect to load of class C -
23	L3-	Connect to load of class C -
24	L4-	Connect to load of class B -
25	L5-	Connect to load of class B -
26	L6-	Connect to load of class B -
27	L7-	Connect to load of class B -
28	L8-	Connect to load of class B -
29	L9-	Connect to load of class B -
30	L10-	Connect to load of class B -
31	L11-	Connect to Pump -
32	L12-	Connect to load of class B -
33	L13-	Connect to load of class B -
34	L14-	Connect to load of class B -

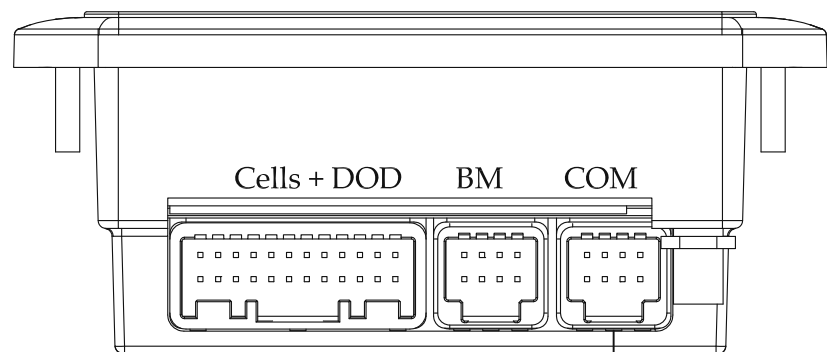


1 PM335



mm

2 PMLCD



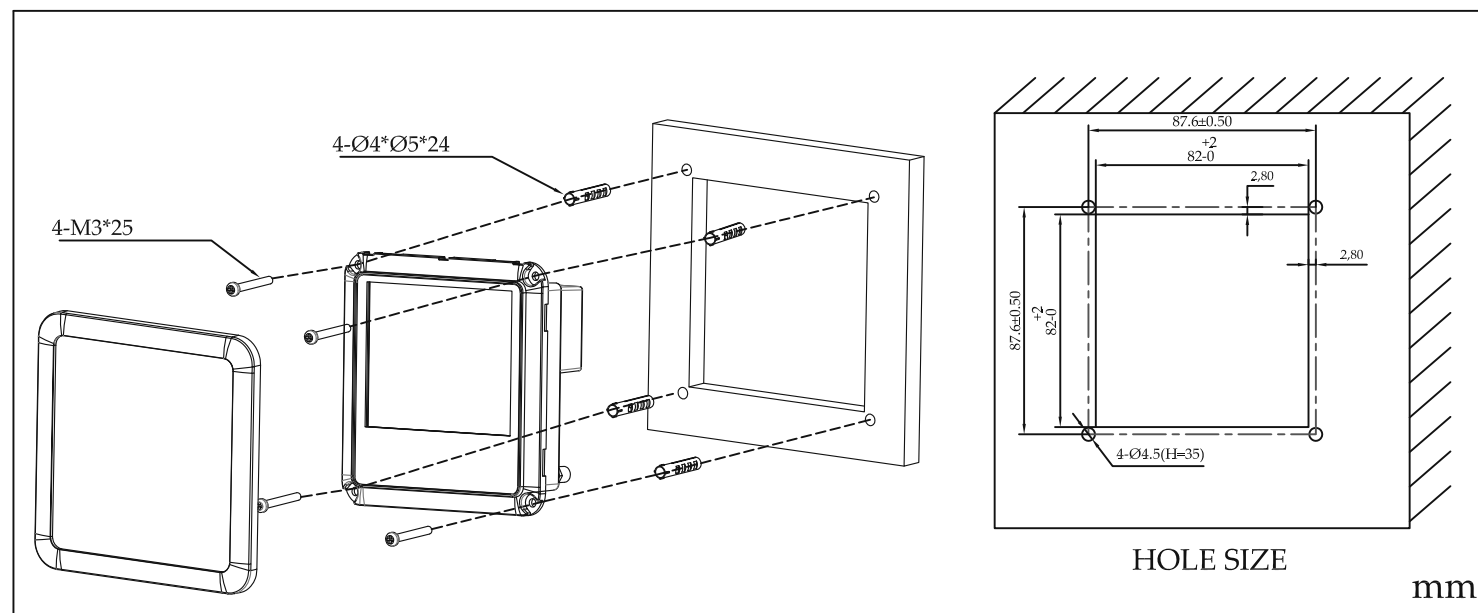
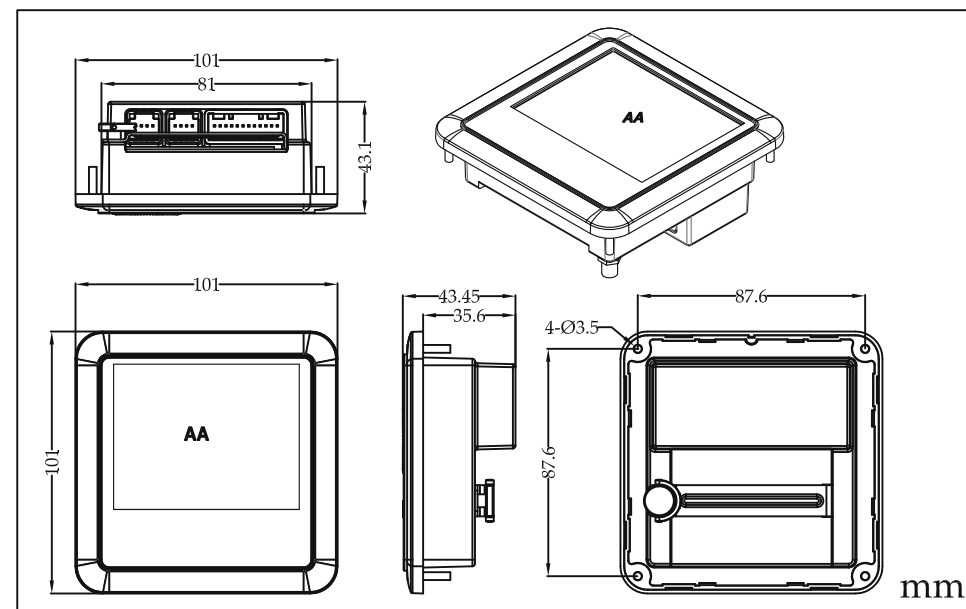
PMLCD-BT/PMLCD
(COM)
PMLCDC

Terminal:
COM



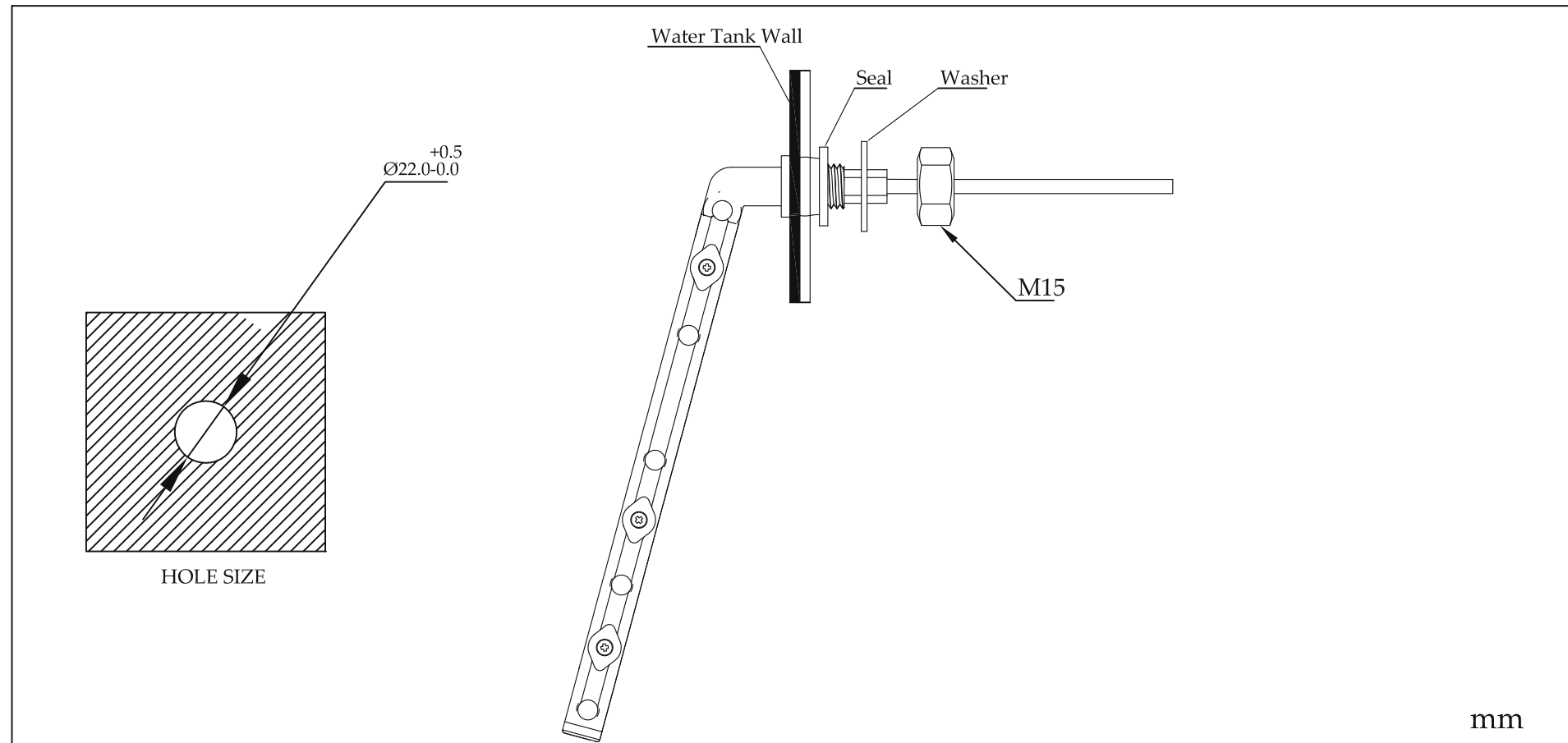
TOPM335 (LCD Display)

Pin No.	Pin Definitions	Specification
1,2	VCC-IN	
5,6	RS485-A+	
3,4	RS485-B	
7,8	GND	

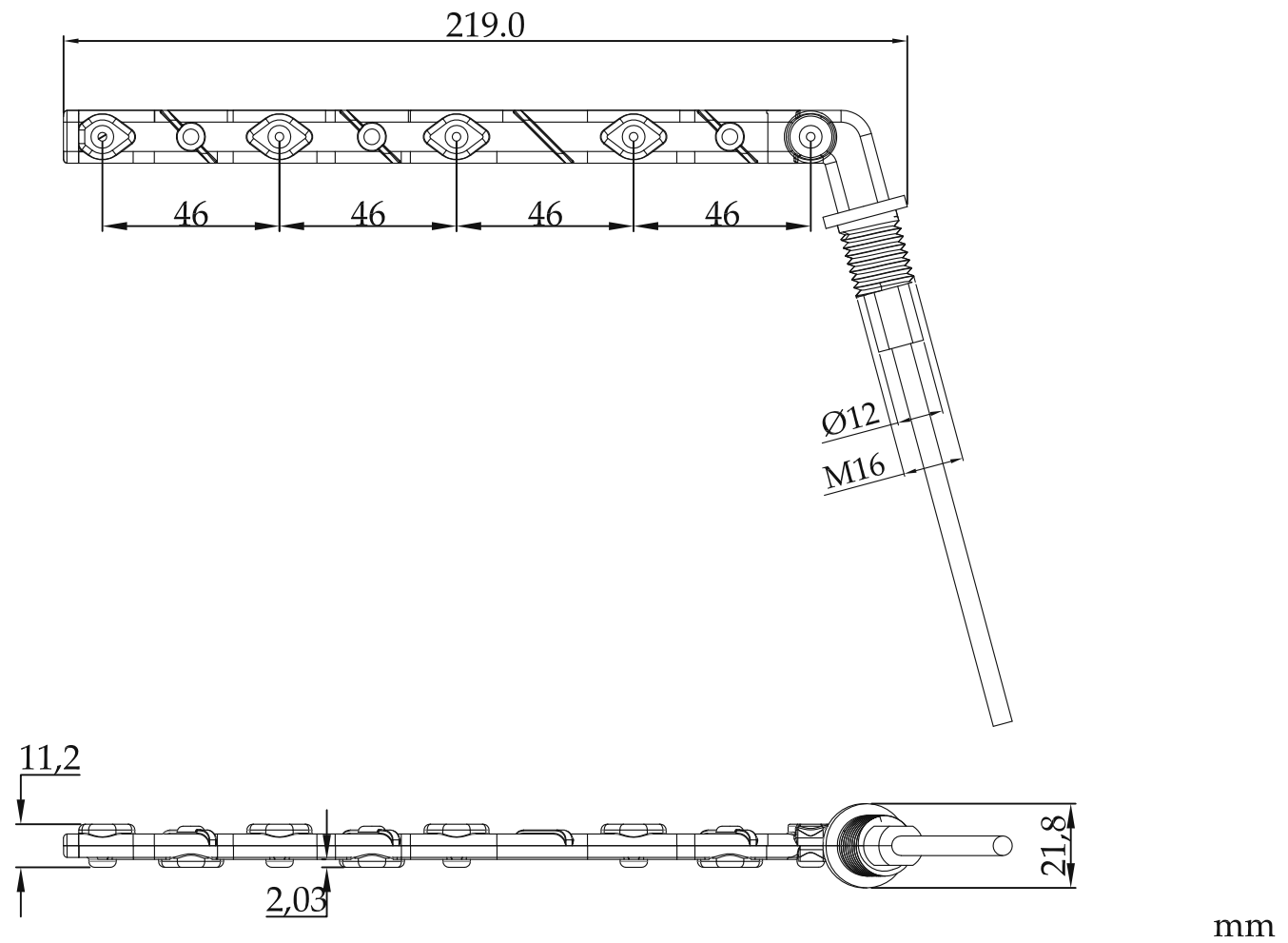


4 Water tank level sensor

(Not supplied)

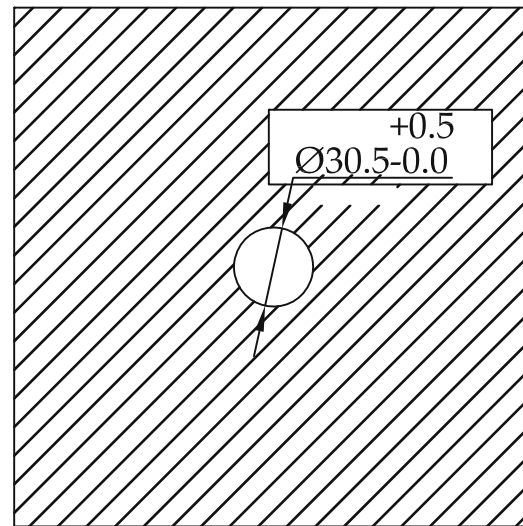


4 PMWS200

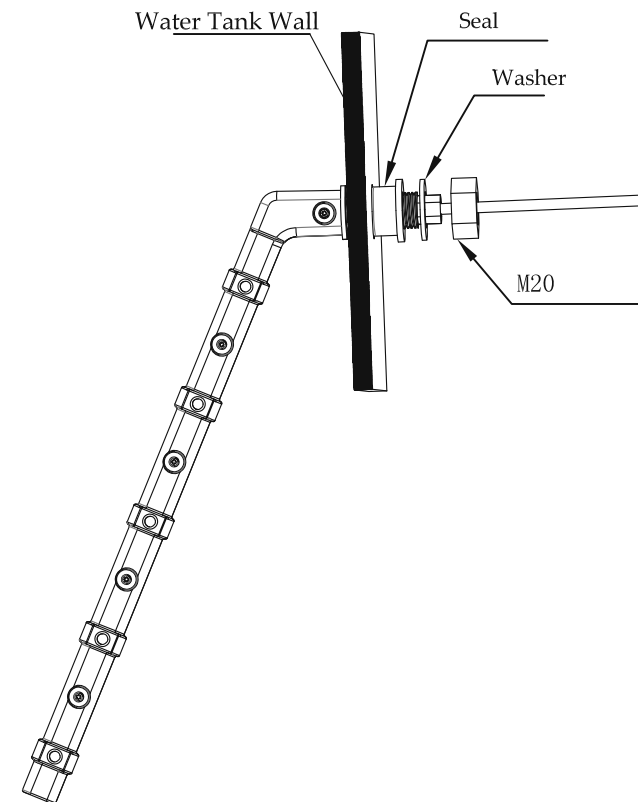


4 Water tank level sensor

(Not supplied)

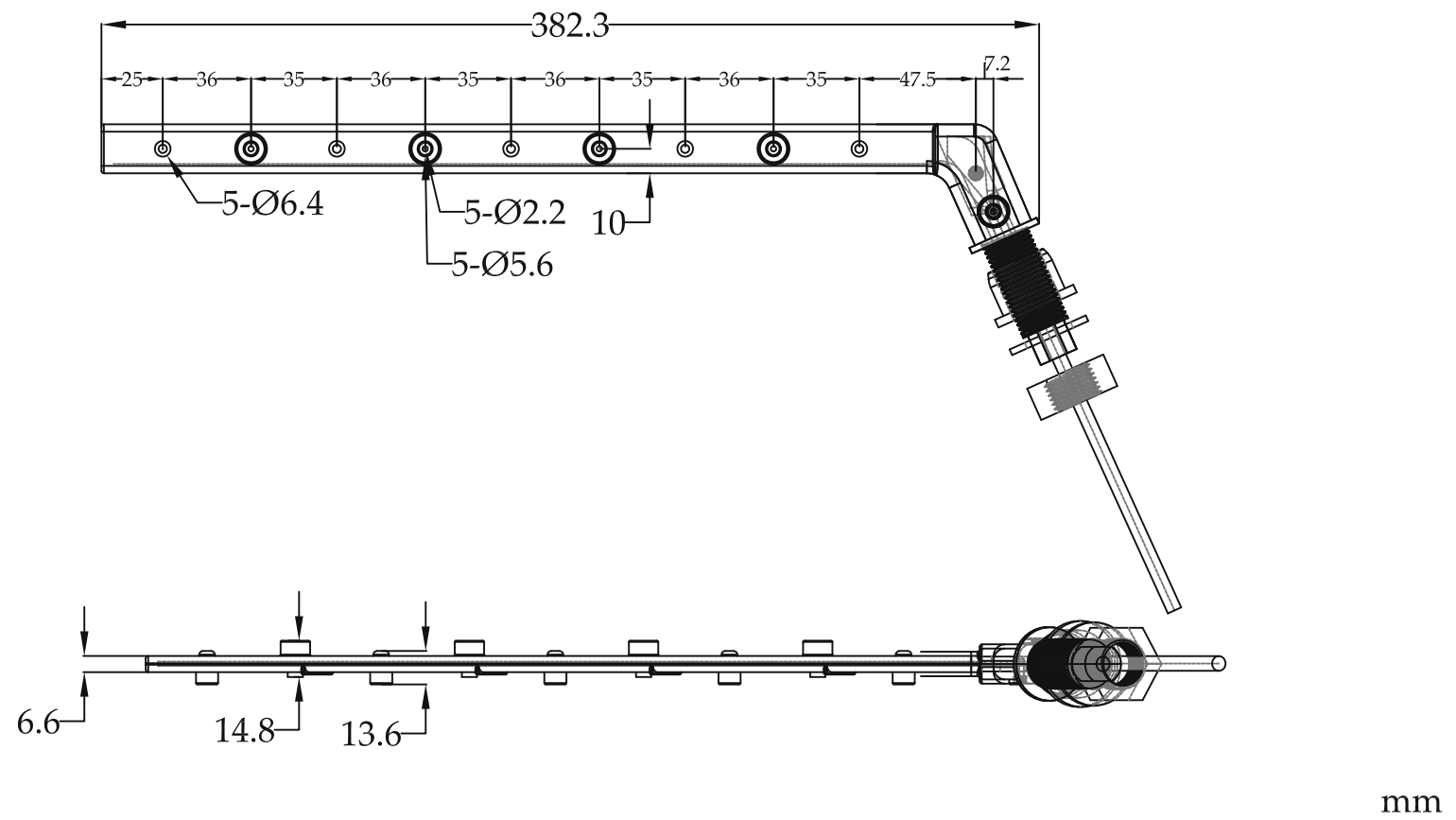


HOLE SIZE



mm

4 PMWS400



WARRANTY STATEMENT

Applicable only to product sold in Australia

Brown & Watson International Pty Ltd of 1500 Ferntree Gully Road, Knoxfield, Vic., telephone (03) 9730 6000, fax (03) 9730 6050, warrants that all products described in its current catalogue (save and except for all bulbs and lenses whether made of glass or some other substance) will under normal use and service be free of failures in material and workmanship for a period of one (1) year (unless this period has been extended as indicated elsewhere) from the date of the original purchase by the consumer as marked on the invoice. This warranty does not cover ordinary wear and tear, abuse, alteration of products or damage caused by the consumer.

To make a warranty claim the consumer must deliver the product at their cost to the original place of purchase or to any other place which may be nominated by either BWI or the retailer from where the product was bought in order that a warranty assessment may be performed. The consumer must also deliver the original invoice evidencing the date and place of purchase together with an explanation in writing as to the nature of the claim.

In the event that the claim is determined to be for a minor failure of the product then BWI reserves the right to repair or replace it at its discretion. In the event that a major failure is determined the consumer will be entitled to a replacement or a refund as well as compensation for any other reasonably foreseeable loss or damage. This warranty is in addition to any other rights or remedies that the consumer may have under State or Federal legislation.

IMPORTANT NOTE

Our goods come with guarantees that cannot be excluded under the Australian Consumer Law. You are entitled to a replacement or refund for a major failure and compensation for any other reasonably foreseeable loss or damage. You are also entitled to have the goods repaired or replaced if the goods fail to be of acceptable quality and the failure does not amount to a major failure.

Distributed by

AUSTRALIA

Brown & Watson International Pty Ltd

Knoxfield, Victoria 3180

Telephone (03) 9730 6000

Facsimile (03) 9730 6050

National Toll Free 1800 113 443

NEW ZEALAND

Narva New Zealand Ltd

22–24 Olive Road

PO Box 12556 Penrose

Auckland, New Zealand

Telephone (09) 525 4575

Facsimile (09) 579 1192

IS406

Issue 14/09/18