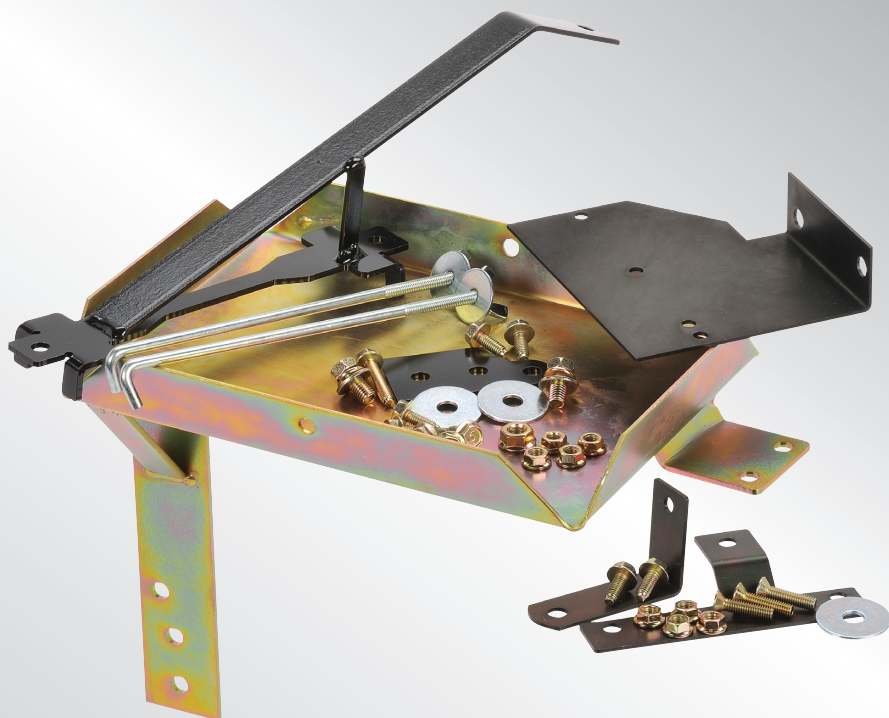


HEAVY DUTY DUAL BATTERY TRAY

**Tray Fitting Instructions to suit Auxiliary battery for
Holden Colorado & Colorado 7**

Years: 2011 onwards

Models: RGD 2.8 Litre Diesel



IMPORTANT SAFETY INFORMATION

Please read this instruction thoroughly before fitting the tray.
This product is recommend to be fitted by a workshop or qualified mechanical person.

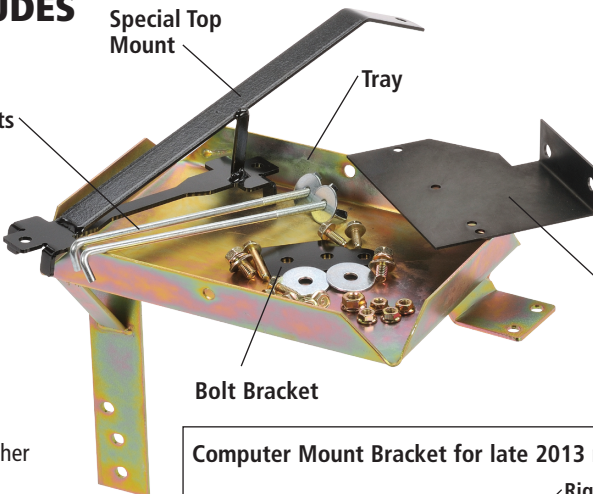
WARNINGS

- Before installation, make sure that the vehicle is stationary and the wheels chocked.
- Be careful when laying wires, not to cause any electrical shorts or wire breakage.
- After installation ensure the bonnet can close without hitting the newly installed battery and battery tray.

SPECIFICATIONS

| | |
|---------------------------------|---|
| Max Battery Size (mm) | L265 x W174 X H200 |
| Max Battery Weight | 19.6Kg |
| Recommended batteries | Optima D34 & Exide Orbital (Fully Sealed AGM type due to close proximity to wiring and computer) |
| Approximate fitting time | 2 hours |
| Special tools | Right Angle Drill |
| Recommended Dual Battery System | P/n: IDC25, DBC150, VSR200 |
| Tray Location | Engine Bay, Passenger side near firewall |

KIT INCLUDES



Special Top Mount

Tray

J Bolts

Isolator Mount

Bolt Bracket


Hardware

- 7 x M6 Bolts
- 1 x M6 Bolt Long
- 4 x M6 Nuts
- 1 x M6 Washer
- 2 x M8 Bolts
- 1 x M8 Nut
- 1 x M8 Body Washer
- *Need to supply
- 1 x Cushion Clamp
- 2 x M6 RIVNUTS are for isolator mount

Computer Mount Bracket for late 2013 models

Hardware

- 3 x M6 Bolts Counter Sunk
- 2 x M6 Bolts, Hex head Short
- 4 x M6 Nuts
- 1 x M6 Body Washer



Right Angle Bracket

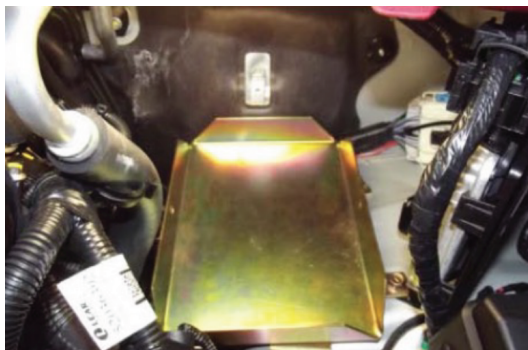
T Bracket

FITTING INSTRUCTIONS

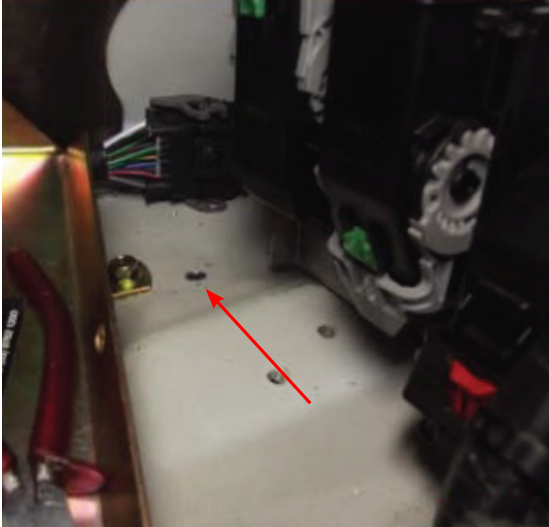
1. Make sure that the vehicle is stationary, the engine is switched off and cool. Disconnect the negative and positive battery terminal from the main battery.
2. Remove the original battery & battery tray and 1 bolt only from the computer mount closest to the tray.
3. Disconnect multi-pin plug behind computer and move to fit along firewall and secure (Temporarily).
4. To allow clearance of the new battery tray.
 - a. You may need to bend L bracket on firewall.
 - b. Manipulate air-con pipe.
 - c. Unclip the loom behind factory tray.
5. Fit Tray with lower arm between brake lines and inner guard.
6. Place 3 x M6 Bolts through special bolt bracket then into the existing holes on the inner guard, now push the bolts through the lower arm of the tray and hand tighten M6 Nuts.



7. Place 2 x M6 Bolts into plate on the front of tray. Do not tighten yet. If fitting this to a July 2012 or older Colorado go to step 12. Follow these steps for August 2012 onwards.



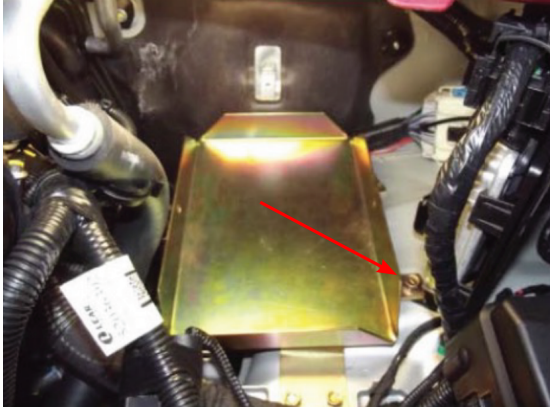
8. Remove existing computer with plastic bracket. Discard the plastic bracket.
 - a. Use M6 Countersunk bolt to long side of right. angle bracket and attach to computer while face down use lower hole.
 - b. Using 2 x M6 bolt countersunk attach T-bracket to the computer.
9. Drill 6mm hole through guard using the right angle Computer bracket as a template.



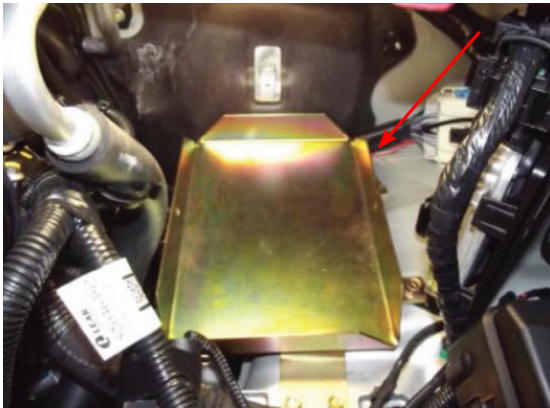
10. Using 1 x M6 Bolt Hex head, attach the right angle bracket to the guard with body washer and M6 nut on the underside and tighten.
11. Using M6 bolt Hex head attach one end of the T bracket to the captive nut behind washer bottle spout.



12. Place 1 x M8 bolts into front corner tab and also through the computer mount (bolt computer mount only for models older than 2013) and into the existing captured nut.



13. Using an M8 drill bit, drill a hole in the inner guard through the pre-drilled hole in rear of tab of the tray.



14. Place M8 Bolt through the tab and inner guard. Place the body washer on the underside and tighten M8 Nut.
15. Tighten all other bolts and nuts.
16. Secure loom between tray and firewall with cushion clamp (P Clip).
17. Fit negative terminal and cable to the battery first, then install battery with negative terminal to rear of tray. DO NOT INSTALL BATTERY WITH POSITIVE TERMINAL TO REAR.

18. Unbolt scuttle panel bolt and use 1 x M6 long bolt in the following ways:
- a. Exide Orbital – Top mount sits above scuttle panel, use bolt washer.



- b. Optima D34 – Top mount sits under scuttle panel.



19. Fit J bolts and tighten the wing nuts.

20. Fit Dual Battery system to mounting bracket and bolt to the existing holes on the radiator support using 2 x M6 bolts.



21. Refit factory tray and battery
22. Reconnect the positive then the negative battery terminal to the main starter battery. Before closing the bonnet make sure the battery and tray do not hit the bonnet.

For assistance throughout the installation procedure please call our customer service representatives on 1800 113 443.

WARRANTY STATEMENT

APPLICABLE ONLY TO PRODUCT SOLD IN AUSTRALIA

Brown & Watson International Pty Ltd of 1500 Ferntree Gully Road, Knoxfield, Vic., telephone (03) 9730 6000, fax (03) 9730 6050, warrants that all products described in its current catalogue (save and except for all bulbs and lenses whether made of glass or some other substance) will under normal use and service be free of failures in material and workmanship for a period of one (1) year (unless this period has been extended as indicated elsewhere) from the date of the original purchase by the consumer as marked on the invoice. This warranty does not cover ordinary wear and tear, abuse, alteration of products or damage caused by the consumer.

To make a warranty claim the consumer must deliver the product at their cost to the original place of purchase or to any other place which may be nominated by either BWI or the retailer from where the product was bought in order that a warranty assessment may be performed. The consumer must also deliver the original invoice evidencing the date and place of purchase together with an explanation in writing as to the nature of the claim.

In the event that the claim is determined to be for a minor failure of the product then BWI reserves the right to repair or replace it at its discretion. In the event that a major failure is determined the consumer will be entitled to a replacement or a refund as well as compensation for any other reasonably foreseeable loss or damage.

This warranty is in addition to any other rights or remedies that the consumer may have under State or Federal legislation.

IMPORTANT NOTE

Our goods come with guarantees that cannot be excluded under the Australian Consumer Law. You are entitled to a replacement or refund for a major failure and compensation for any other reasonably foreseeable loss or damage. You are also entitled to have the goods repaired or replaced if the goods fail to be of acceptable quality and the failure does not amount to a major failure.

Distributed by

AUSTRALIA

Brown & Watson International Pty Ltd

Knoxfield, Victoria 3180

Telephone (03) 9730 6000

Facsimile (03) 9730 6050

National Toll Free 1800 113 443

NEW ZEALAND

Narva New Zealand Ltd

22–24 Olive Road

PO Box 12556 Penrose

Auckland, New Zealand

Telephone (09) 525 4575

Facsimile (09) 579 1192